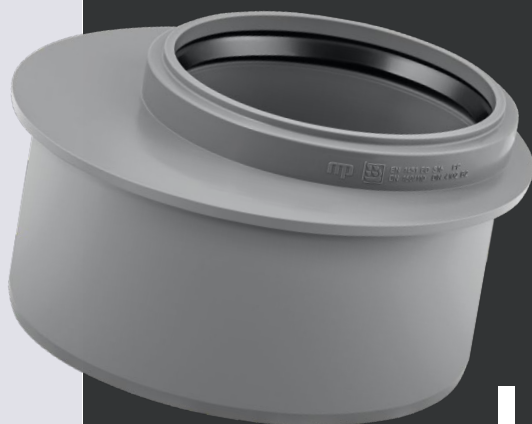
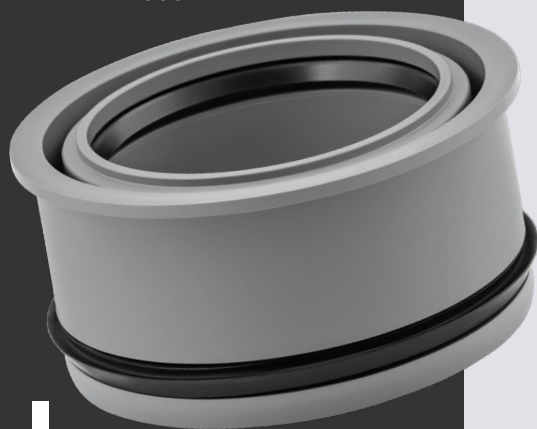

HTR 160/110

SHORT REDUCER
for pipe socket



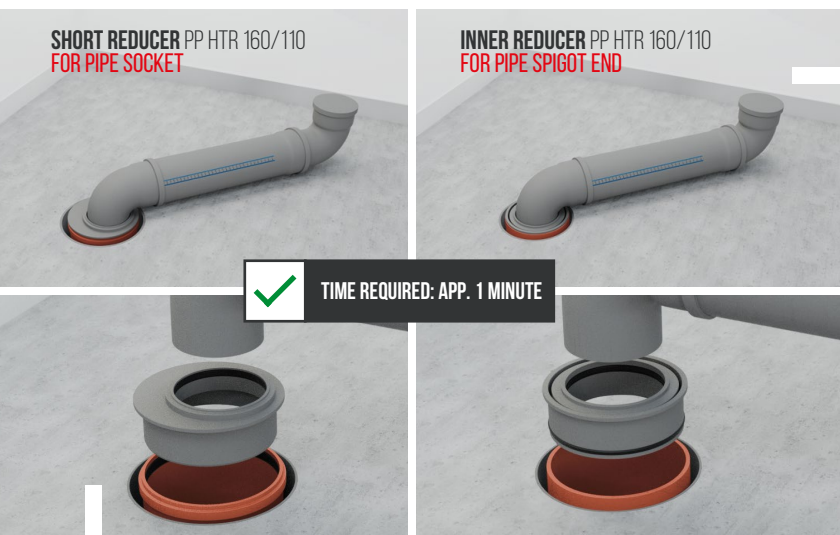
INDEX: 11385

INDEX: 11356



HTR 160/110

INNER REDUCER
for pipe spigot end



HTplus Internal Sewerage – new products are now available

SHORT REDUCER PP HTR 160/110 FOR PIPE SOCKET

INNER REDUCER PP HTR 160/110 FOR PIPE SPIGOT END

New solutions – reduced assembly time and a smaller installation footprint!

Sewage pipes installed above the floor level are frequently capped with a pipe spigot end without a socket. In situations like this, in order to install drainage pipes it is usually necessary to break open the floor and perform additional installation work, both of which are very labour-intensive.

A convenient way to avoid the problem is to use the HTR 160/110 inner reducer which is connected directly to the pipe spigot end.

Should it prove necessary to lower the height of the vertical part of the sewage installation, the optimal solution is to use the HTR 160/110 short reducer. It is installed in the pipe socket.



ADVANTAGES:

- Optimal use of space
- Instant assembly
- Possible to connect with the PVC DN160 pipes
- Indispensable when renovating old installations
- Made of PP polypropylene